

Schmick Repair Gallery



Schmick paint technicians are highly experienced and qualified spray painters; utilising leading edge SMART technology we professionally repair most minor damage to look like new again.



The following section displays the repair guide overview and samples of actual damage repaired for members.



Schmick Repair Gallery

For full program details please refer to the membership terms and conditions

Repairs Guide Overview

I'd just like to say thank you for a great job on the wheel you repaired yesterday.

Vittoria (Fairfield)



PRICE COMPARISON GUIDE

Service	Member Price	Panel shop (average)
Bumper Bar Scrapes	\$50	\$350 – \$1200
Deep Scratch	\$50	\$350 – \$1200
Body Kit Repair	\$50	\$250 – \$1200
Alloy Wheel Repair	\$50	\$200 – \$500



We take the sting out of your new car ding



Bumper bar scrapes and scratches



up to 500mm on all plastic bumper bars

BEFORE



AFTER



Schmick Repair Gallery

For full program details please refer to the membership terms and conditions



Deep panel scratch or dent with paint damage



up to 60mm in length or diameter on all vertical panels (excludes roof and bonnet)

BEFORE



AFTER



We take the sting out of your new car ding



Surface scratches and marks



covering up to 4 panels

BEFORE



AFTER



Schmick Repair Gallery

For full program details please refer to the membership terms and conditions



Pressure dents



up to 60mm in diameter on all flat metal panels

BEFORE



AFTER



We take the sting out of your new car ding



Side mirror scrapes & scratches



covering one plastic painted mirror casing – no size limit

BEFORE



AFTER



Schmick Repair Gallery

For full program details please refer to the membership terms and conditions



Body kit scuffs & scrapes



up to 500mm on all plastic body kit components

BEFORE



AFTER



We take the sting out of your new car ding



Alloy wheel scrapes (painted finish wheels)



scuffs & scrapes on one alloy wheel – no size limit (*excludes chrome finished wheels)

BEFORE



AFTER



Schmick Repair Gallery

For full program details please refer to the membership terms and conditions



Alloy wheel scrapes (machine finish wheels)



scuffs & scrapes on one alloy wheel – no size limit (*may lose fine machine lines on outer wheel face)

BEFORE



AFTER



We take the sting out of your new car ding



Interior leather & vinyl repairs

up to 80mm in length



BEFORE



AFTER



Schmick Repair Gallery

For full program details please refer to the membership terms and conditions

“Professional work was undertaken and general demeanour of your technician was exemplary. Cannot recommend Schmick’s services highly enough.”

Sid Bell (Wattle Glen, VIC)



Member discounted repairs for larger damage

The following section displays repairs that exceeded the size limits of the membership program but were still repaired by a Schmick technician at a member discounted price.

(Note: Larger damage that exceeds the minor cosmetic program size limits but is still repairable by your Schmick technician can be quoted and repaired at the discretion of Schmick).

We take the sting out of your new car ding



\$1,400 in a repair shop **\$350 with Schmick**

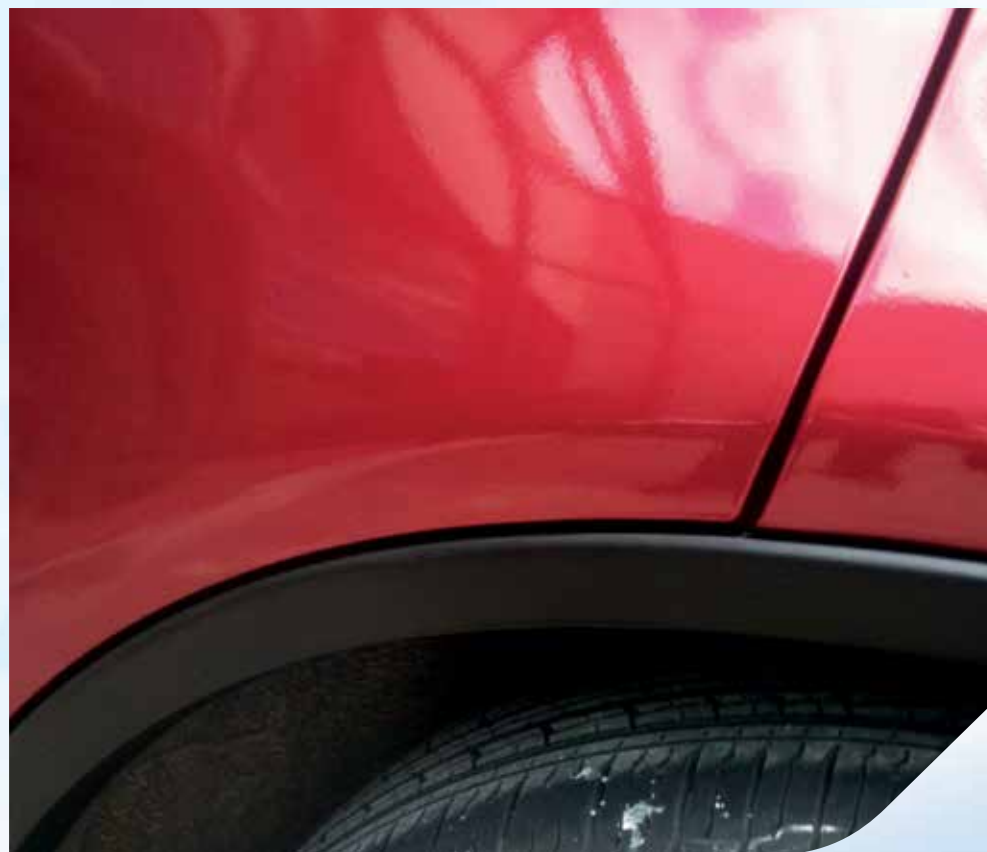


Repairs of larger damage that exceed the minor cosmetic program are at the discretion of Schmick

BEFORE



AFTER



Schmick Repair Gallery

For full program details please refer to the membership terms and conditions



\$1,600 in a repair shop **\$450 with Schmick**



Repairs of larger damage that exceed the minor cosmetic program are at the discretion of Schmick

BEFORE



AFTER



We take the sting out of your new car ding

